



# Food Waste Tracking: What You Need to Know

---



*Presented by:*  
**Andrew Shakman**  
Co-Founder & President,  
LeanPath, Inc.

**Contact:**  
**Phone:** (503) 620-6512 x100  
**E-mail:** [ashakman@leanpath.com](mailto:ashakman@leanpath.com)  
**Web:** [www.leanpath.com](http://www.leanpath.com)  
**Blog:** [blog.leanpath.com](http://blog.leanpath.com)

© LeanPath, Inc. | All Rights Reserved

Please note: This presentation may not be copied, transmitted, performed, or used to create derivative works without permission from LeanPath.

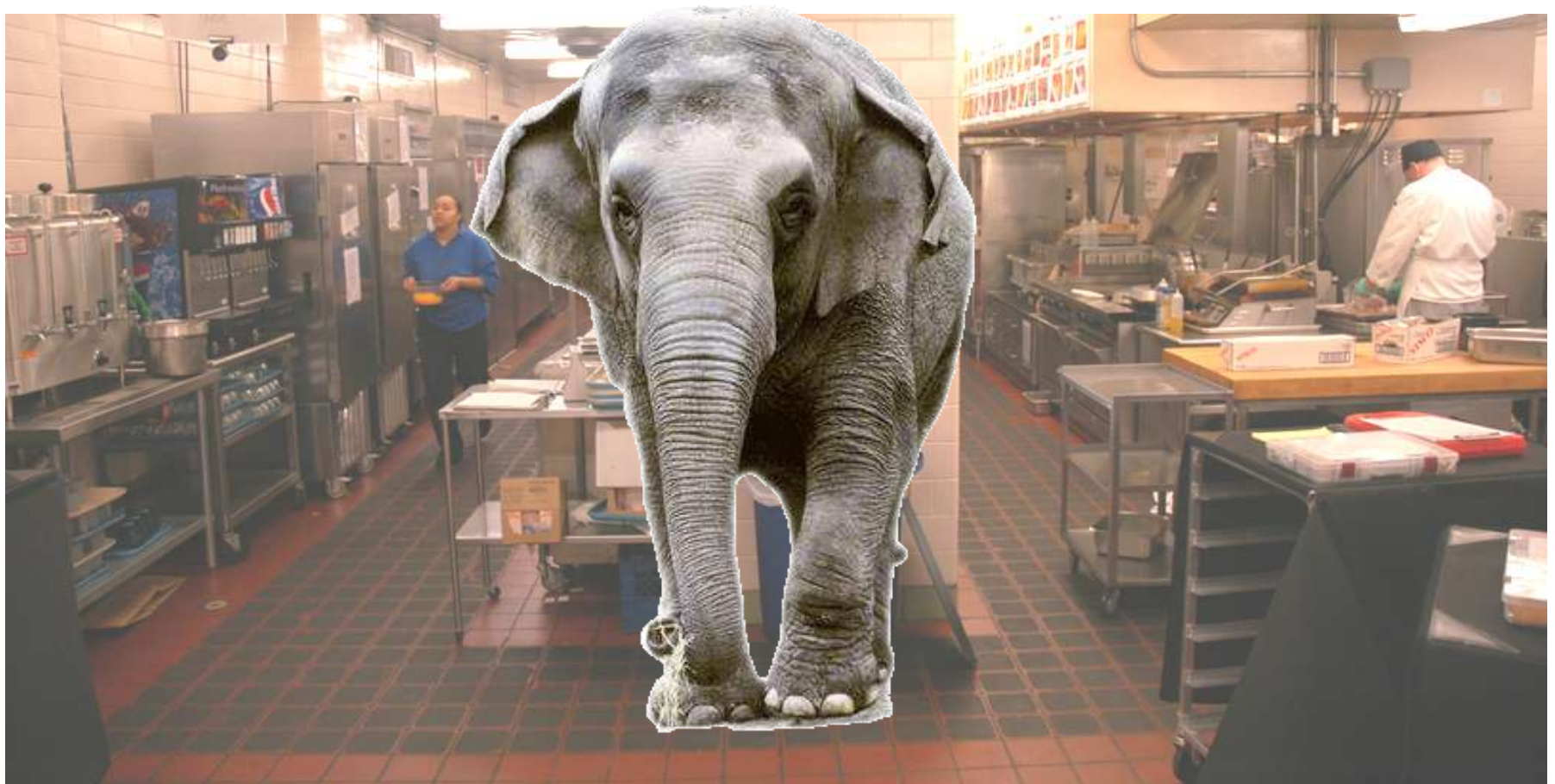
# My perspective

---



- Co-founder of LeanPath, a technology company providing food waste tracking systems
- Food waste management consulting and education
- Co-author of Food Waste Focus blog
- Experience with volume foodservice across the US

# Why Track Food Waste?





**Estimate:**

**>.3 lbs per meal served**

# Why focus on food waste?

---



## *The Case For Food Waste Reduction*

Reduce  
Environmental  
Impacts

Reclaim  
Financial  
Resources

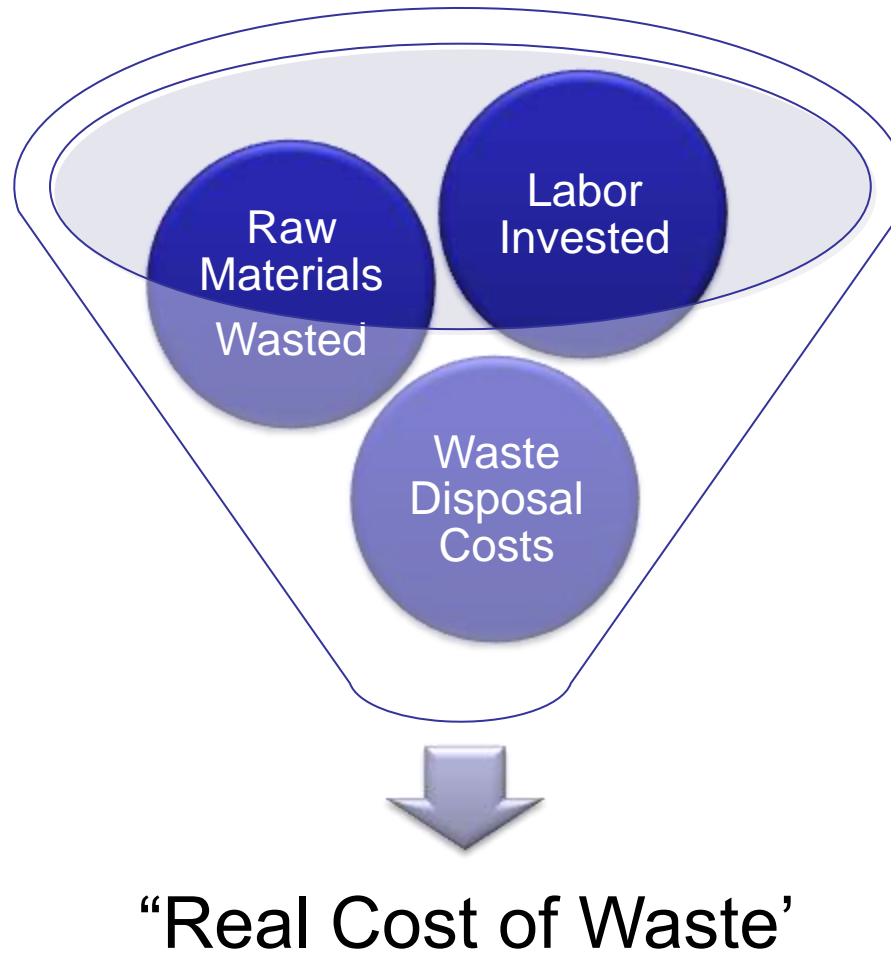
Engage Staff

# Environmental Impact

---



# The Real Cost of Waste



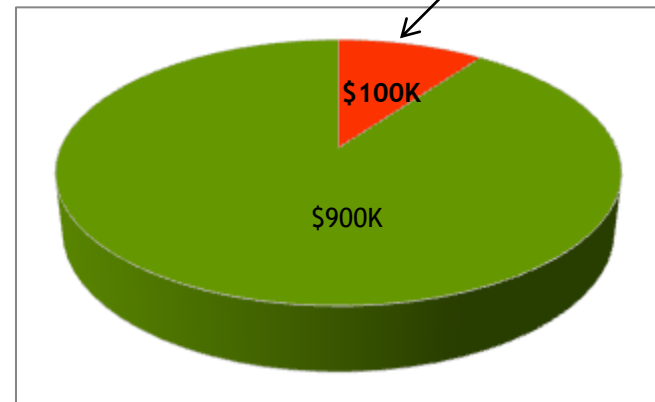
# Scope

---



Food waste generated by the operator (“pre-consumer waste”) represents 4-10% of the food purchased in volume foodservice

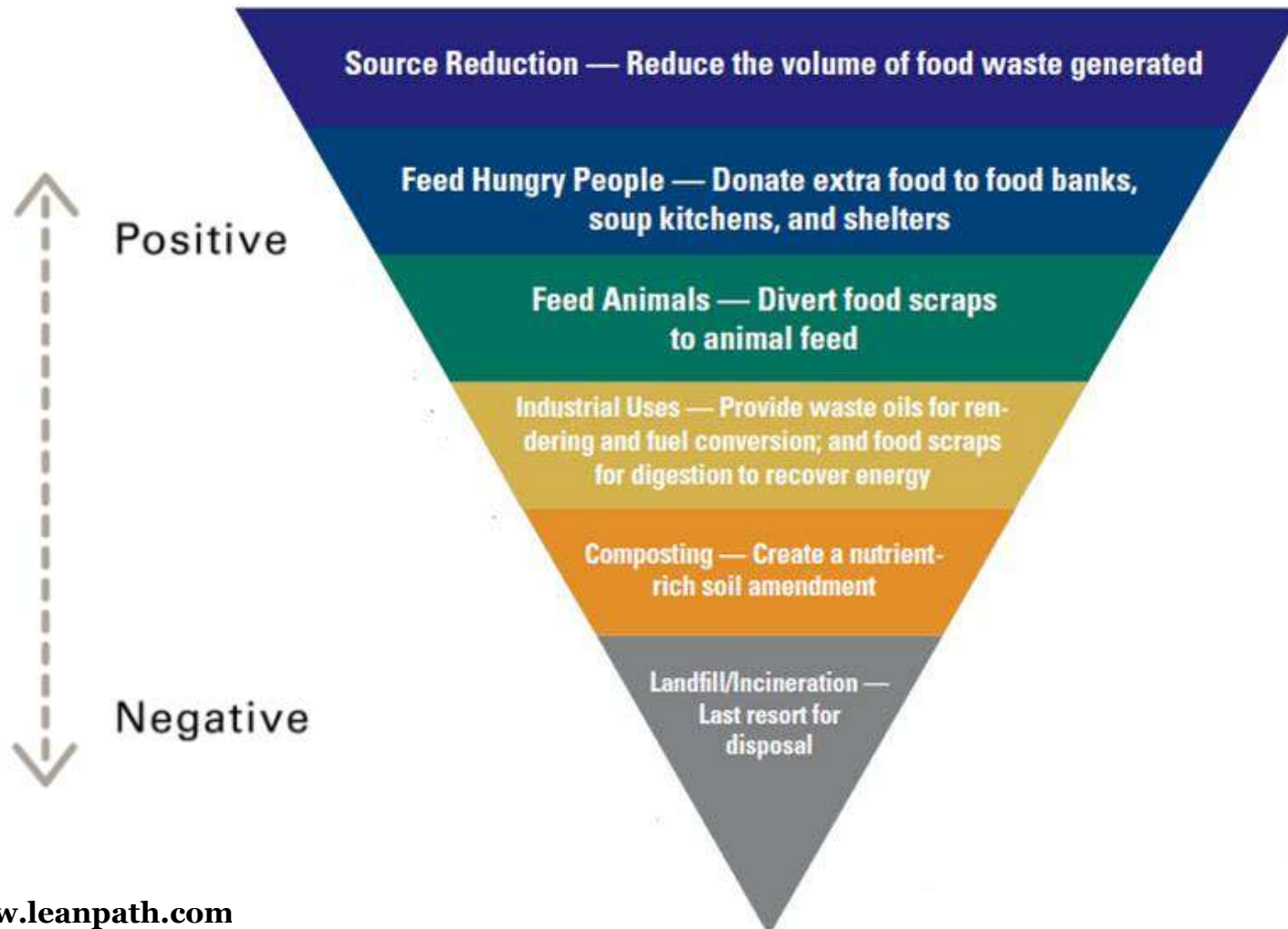
Up to \$100K in Food Waste!



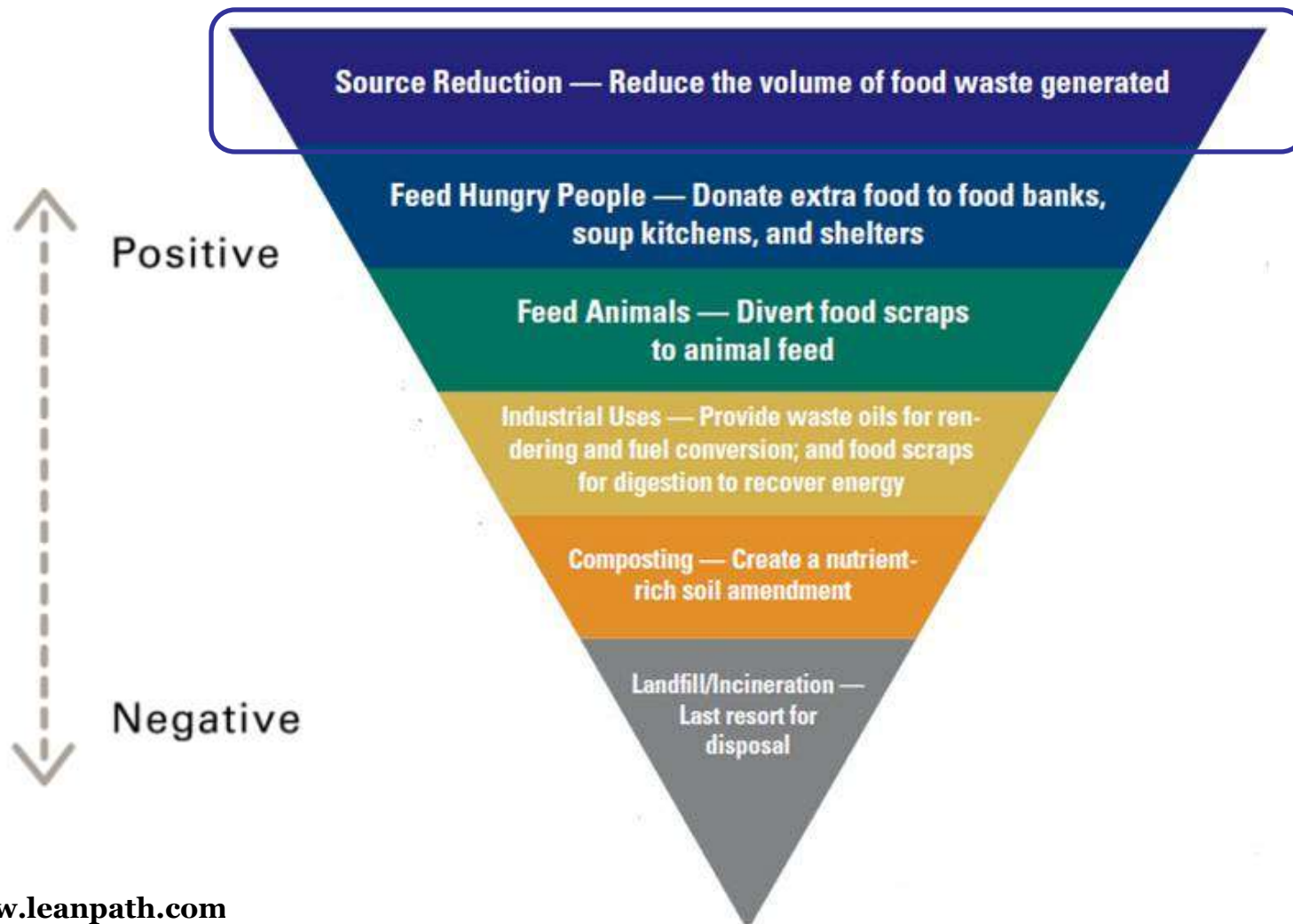
Example: \$1.0M Food Purchases

# So where do we start?

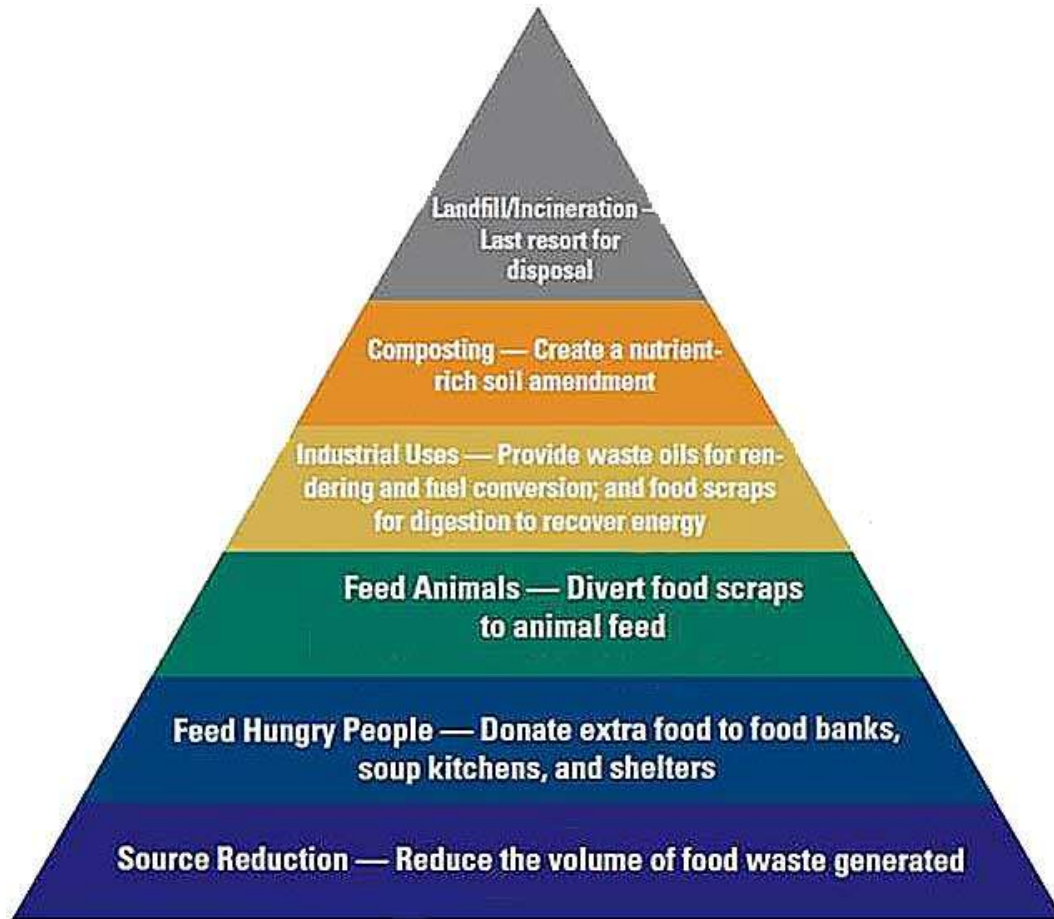
# EPA Food Waste Recovery Hierarchy



# How To Tackle Source Reduction?



# As often practiced...



# Source Reduction

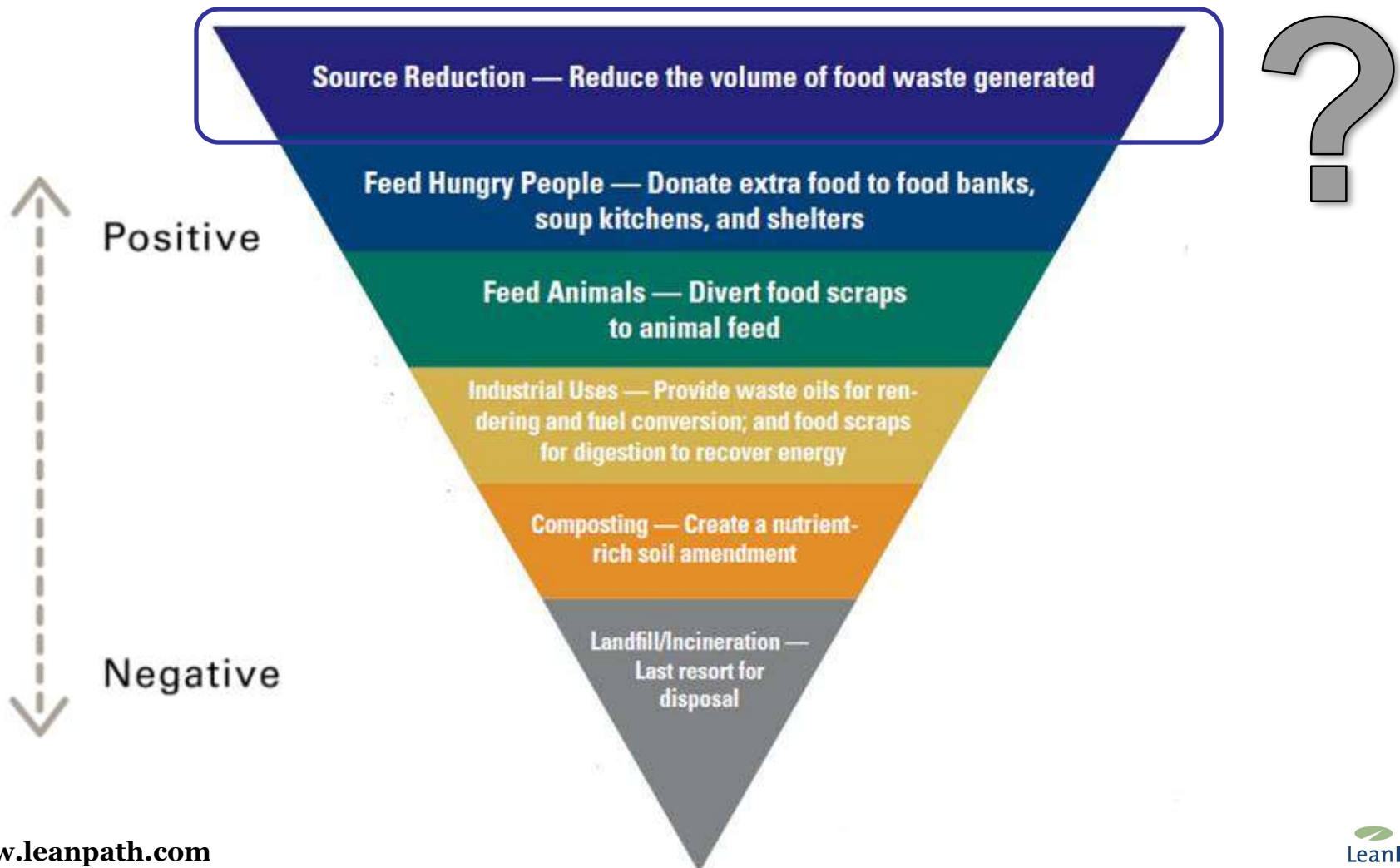
---



Often overlooked

- Not as tangible as composting or food recovery
- Operators, consultants and government aren't sure what tools are available to address the problem

# How To Tackle Source Reduction?



# Food Waste Tracking

# Frameworks Point to Measurement

---



# **“We manage the things we measure”**

*If we don't track how much we throw away, how do we really know what and how to improve? If we don't measure, we're guessing.*

*Feedback loops  
focus behavior and  
drive change*

# Impact from Tracking

---



Tracking enables you to:

- Establish baselines
- Diagnose issues
- Raise employee awareness
- Raise guest awareness
- Create accountability
- Monitor & benchmark progress.



**Reduction & tracking  
=  
Two sides of one coin.**

# How to Track Food Waste?

# Two Types of Food Waste

---



Pre-Consumer  
Food Waste  
(aka “Kitchen Waste”)

Post-Consumer  
Food Waste  
(aka “Plate Waste”)

Different Tracking Approach for Each

# Pre/Post Food Waste Dynamics



	Pre-Consumer	Post-Consumer
Drivers	Overproduction, spoilage, expiration, trim waste, communication, adherence to forecasts/recipes	Guest awareness and behavior, portion sizes, self-service
Natural state?	Source-segregated	Commingled
Cost impact	Large, direct	Varies by op; indirect
Driven by:	Kitchen staff	Guests
Conclusion	Track it all, every day	Assess periodically (monthly, quarterly)

# How to Track Pre-Consumer Food Waste (aka Kitchen Waste) Continuously

# What To Track

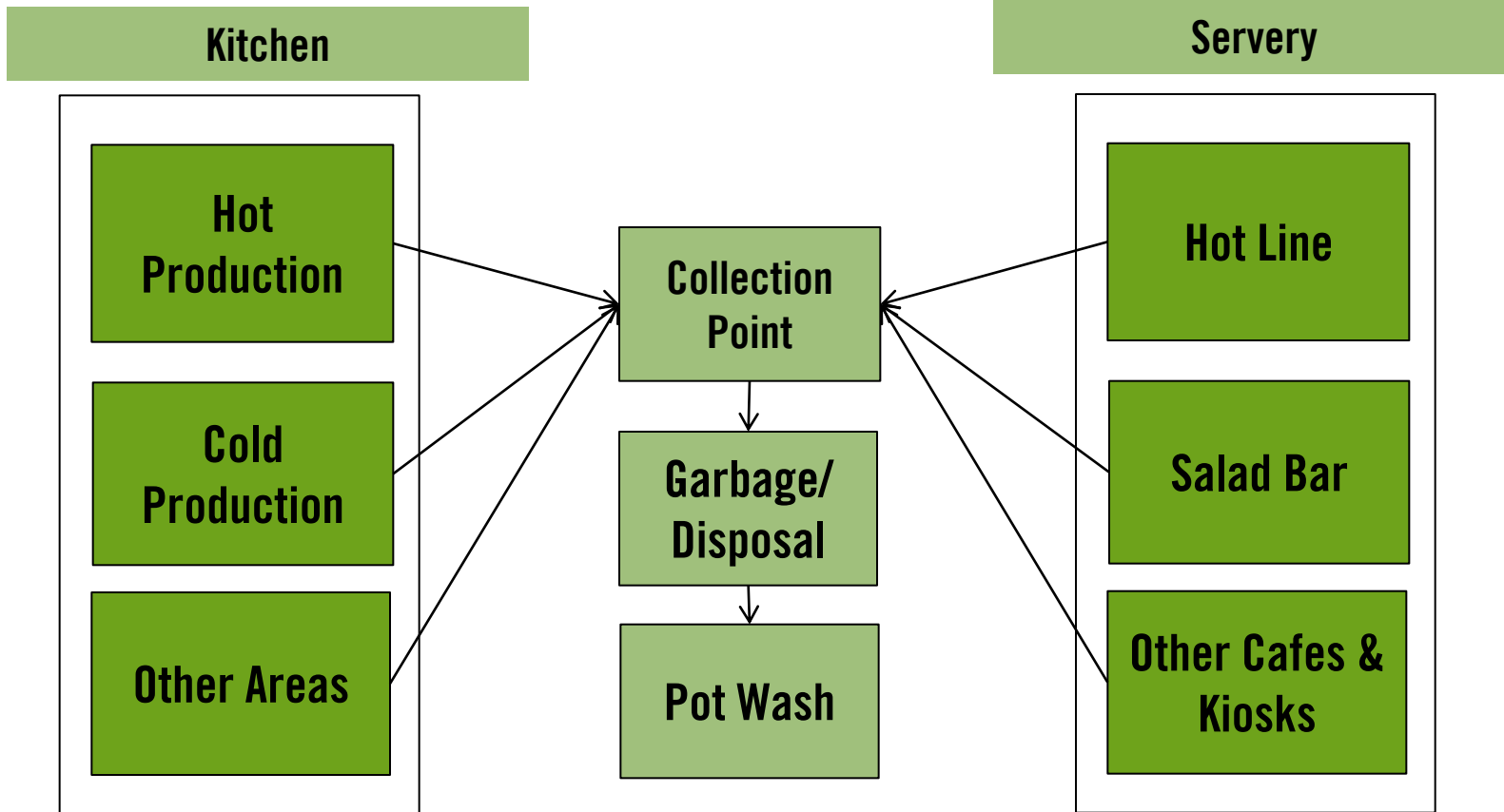
---



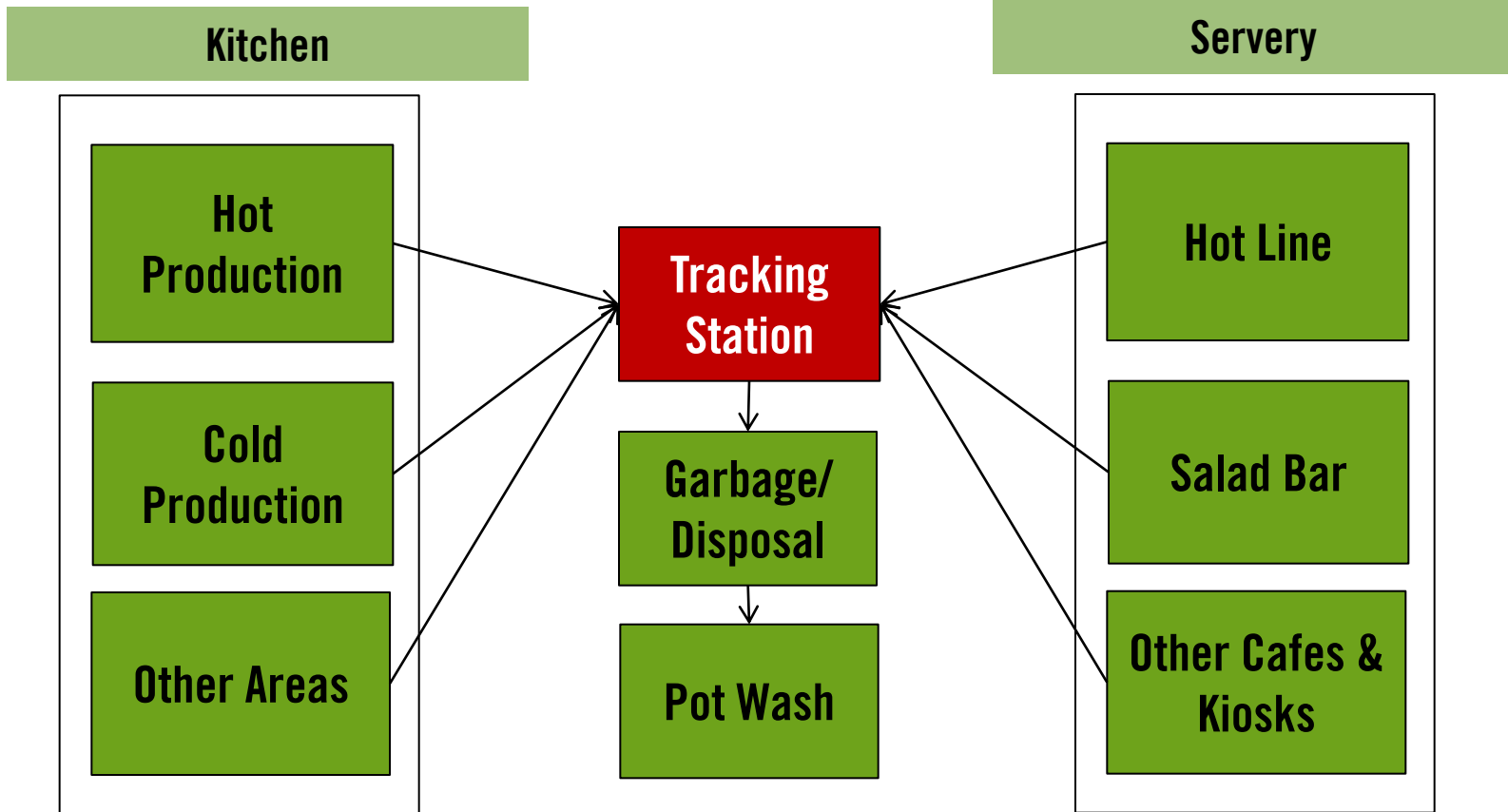
- Overproduction
- Spoilage
- Expired/Dated Items
- Trim Waste
  - (i.e. fresh fruit rinds)
- Contamination
- Burned/Dropped Items



# Look at Workflow



# Centralize Tracking



# Policies

---



- Establish a review policy
  - With full attention to food safety
  - Appropriate staff involved
- Record what cannot be used on-site
  - Includes items to be donated, composted, or landfilled

# Decide How Much Detail

---



- The more detail, the greater opportunity to pinpoint savings
- Larger operations will usually benefit by savings pennies and nickels across massive footprints
- Smaller operations may choose to focus on less granular detail

# Basic Information

---



- Date & Time
- Recording Employee Name
- Food Item
  - by general category e.g “Produce”
  - Very specifically e.g. Apples
- Reason for Loss
- Unit of Measure
  - Weight, Volume or Each/Count

# Advanced Information

---



- Container (for Tare Weight)
- Station/Source
- Disposition
- Daypart
- Banquet Event Order #
- Pre v. Post Consumer
- Overs / Not-Yet-Waste (NYW)
- Notes

# Tool Options

---



- Paper Sheets
  - Suited for lowest volume ops, no detail; lowest cost
- Software Tracking + Paper
  - Suited for low-medium ops, good detail.
- Full Automation
  - Suited for higher-volume ops, maximum detail
  - Easiest for staff to use, easiest for managers to run
  - Higher cost, but can deliver powerful ROI (~4%+ food cost savings)





# Advanced Logbooks + Software



WasteLOGGER Main Street Bistro (Bronze) LeanPath

Main Street Bistro										Date
Name	Qty	Measure	Size	Pan		Food		Loss Reason		
		Pounds	8"	Full	Shotgun	Fruit	Dairy	Overproduction	Misorder	
		Quarts	4"	Half	Sixth Pan	Vegetables	Pork	Expired	Burned	
		Gallons	2.5"	Third	Soup Bell	Starch	Beef	Trim Waste	Dropped	
		Each		Quarter	Lepp	Soup/Sauce	Poultry	Spoilage	HAACP	

Name	Qty	Measure	Size	Pan		Food		Loss Reason	
		Pounds	8"	Full	Shotgun	Fruit	Dairy	Overproduction	Misorder
		Quarts	4"	Half	Sixth Pan	Vegetables	Pork	Expired	Burned
		Gallons	2.5"	Third	Soup Bell	Starch	Beef	Trim Waste	Dropped
		Each		Quarter	Lepp	Soup/Sauce	Poultry	Spoilage	HAACP

Name	Qty	Measure	Size	Pan		Food		Loss Reason	
		Pounds	8"	Full	Shotgun	Fruit	Dairy	Overproduction	Misorder
		Quarts	4"	Half	Sixth Pan	Vegetables	Pork	Expired	Burned
		Gallons	2.5"	Third	Soup Bell	Starch	Beef	Trim Waste	Dropped
		Each		Quarter	Lepp	Soup/Sauce	Poultry	Spoilage	HAACP

Name	Qty	Measure	Size	Pan		Food		Loss Reason	
		Pounds	8"	Full	Shotgun	Fruit	Dairy	Overproduction	Misorder
		Quarts	4"	Half	Sixth Pan	Vegetables	Pork	Expired	Burned
		Gallons	2.5"	Third	Soup Bell	Starch	Beef	Trim Waste	Dropped
		Each		Quarter	Lepp	Soup/Sauce	Poultry	Spoilage	HAACP

Name	Qty	Measure	Size	Pan		Food		Loss Reason	
		Pounds	8"	Full	Shotgun	Fruit	Dairy	Overproduction	Misorder
		Quarts	4"	Half	Sixth Pan	Vegetables	Pork	Expired	Burned
		Gallons	2.5"	Third	Soup Bell	Starch	Beef	Trim Waste	Dropped
		Each		Quarter	Lepp	Soup/Sauce	Poultry	Spoilage	HAACP

© LeanPath, Inc. | All Rights Reserved

- Grouping by Individual Transaction Frames
- Also designed for ease of input into reporting software package

# Advanced Logbooks + Software



WasteLOGGER Broadway Bistro (Silver) LeanPath

Broadway Bistro		Date			
Qty	Measure	Size	Pan	Food	Loss
	lbs-Oz-Gal-Ea	3-4-12	Full-Max-Third-Bal	Wheat	Qe@00p-Ep-Tim-Spiled-@0000p-Sumac
	lbs-Oz-Gal-Ea	3-4-12	Full-Max-Third-Bal	Phacelia	Qe@00p-Ep-Tim-Spiled-@0000p-Sumac
	lbs-Oz-Gal-Ea	3-4-12	Full-Max-Third-Bal	Asparagus	Qe@00p-Ep-Tim-Spiled-@0000p-Sumac
	lbs-Oz-Gal-Ea	3-4-12	Full-Max-Third-Bal	Onion	Qe@00p-Ep-Tim-Spiled-@0000p-Sumac
	lbs-Oz-Gal-Ea	3-4-12	Full-Max-Third-Bal	Other-Fruit	Qe@00p-Ep-Tim-Spiled-@0000p-Sumac
	lbs-Oz-Gal-Ea	3-4-12	Full-Max-Third-Bal	Sp-Peppers	Qe@00p-Ep-Tim-Spiled-@0000p-Sumac
	lbs-Oz-Gal-Ea	3-4-12	Full-Max-Third-Bal	Red Peppers	Qe@00p-Ep-Tim-Spiled-@0000p-Sumac
	lbs-Oz-Gal-Ea	3-4-12	Full-Max-Third-Bal	Lettuce	Qe@00p-Ep-Tim-Spiled-@0000p-Sumac
	lbs-Oz-Gal-Ea	3-4-12	Full-Max-Third-Bal	Coriander	Qe@00p-Ep-Tim-Spiled-@0000p-Sumac
	lbs-Oz-Gal-Ea	3-4-12	Full-Max-Third-Bal	Cabbage	Qe@00p-Ep-Tim-Spiled-@0000p-Sumac
	lbs-Oz-Gal-Ea	3-4-12	Full-Max-Third-Bal	Tomatoes	Qe@00p-Ep-Tim-Spiled-@0000p-Sumac
	lbs-Oz-Gal-Ea	3-4-12	Full-Max-Third-Bal	Other-Veggie	Qe@00p-Ep-Tim-Spiled-@0000p-Sumac
	lbs-Oz-Gal-Ea	3-4-12	Full-Max-Third-Bal	Vegetables	Qe@00p-Ep-Tim-Spiled-@0000p-Sumac
	lbs-Oz-Gal-Ea	3-4-12	Full-Max-Third-Bal	Soup-Orzo	Qe@00p-Ep-Tim-Spiled-@0000p-Sumac
	lbs-Oz-Gal-Ea	3-4-12	Full-Max-Third-Bal	Sauce-Brng	Qe@00p-Ep-Tim-Spiled-@0000p-Sumac
	lbs-Oz-Gal-Ea	3-4-12	Full-Max-Third-Bal	Onion	Qe@00p-Ep-Tim-Spiled-@0000p-Sumac
	lbs-Oz-Gal-Ea	3-4-12	Full-Max-Third-Bal	Beer-Spck	Qe@00p-Ep-Tim-Spiled-@0000p-Sumac
	lbs-Oz-Gal-Ea	3-4-12	Full-Max-Third-Bal	Beer-@00	Qe@00p-Ep-Tim-Spiled-@0000p-Sumac
	lbs-Oz-Gal-Ea	3-4-12	Full-Max-Third-Bal	Chicken	Qe@00p-Ep-Tim-Spiled-@0000p-Sumac
	lbs-Oz-Gal-Ea	3-4-12	Full-Max-Third-Bal	Onion/Onion	Qe@00p-Ep-Tim-Spiled-@0000p-Sumac
	lbs-Oz-Gal-Ea	3-4-12	Full-Max-Third-Bal	Turkey	Qe@00p-Ep-Tim-Spiled-@0000p-Sumac
	lbs-Oz-Gal-Ea	3-4-12	Full-Max-Third-Bal	Pork	Qe@00p-Ep-Tim-Spiled-@0000p-Sumac
	lbs-Oz-Gal-Ea	3-4-12	Full-Max-Third-Bal	Coffee	Qe@00p-Ep-Tim-Spiled-@0000p-Sumac
	lbs-Oz-Gal-Ea	3-4-12	Full-Max-Third-Bal	Milk	Qe@00p-Ep-Tim-Spiled-@0000p-Sumac
	lbs-Oz-Gal-Ea	3-4-12	Full-Max-Third-Bal	Cheese	Qe@00p-Ep-Tim-Spiled-@0000p-Sumac
	lbs-Oz-Gal-Ea	3-4-12	Full-Max-Third-Bal	Yogurt	Qe@00p-Ep-Tim-Spiled-@0000p-Sumac
	lbs-Oz-Gal-Ea	3-4-12	Full-Max-Third-Bal	Beans	Qe@00p-Ep-Tim-Spiled-@0000p-Sumac
	lbs-Oz-Gal-Ea	3-4-12	Full-Max-Third-Bal	Eggs	Qe@00p-Ep-Tim-Spiled-@0000p-Sumac
	lbs-Oz-Gal-Ea	3-4-12	Full-Max-Third-Bal	Pasta	Qe@00p-Ep-Tim-Spiled-@0000p-Sumac
	lbs-Oz-Gal-Ea	3-4-12	Full-Max-Third-Bal	Rice	Qe@00p-Ep-Tim-Spiled-@0000p-Sumac
	lbs-Oz-Gal-Ea	3-4-12	Full-Max-Third-Bal	Beans	Qe@00p-Ep-Tim-Spiled-@0000p-Sumac
	lbs-Oz-Gal-Ea	3-4-12	Full-Max-Third-Bal	Potatoes	Qe@00p-Ep-Tim-Spiled-@0000p-Sumac
	lbs-Oz-Gal-Ea	3-4-12	Full-Max-Third-Bal	Pine-Tots	Qe@00p-Ep-Tim-Spiled-@0000p-Sumac

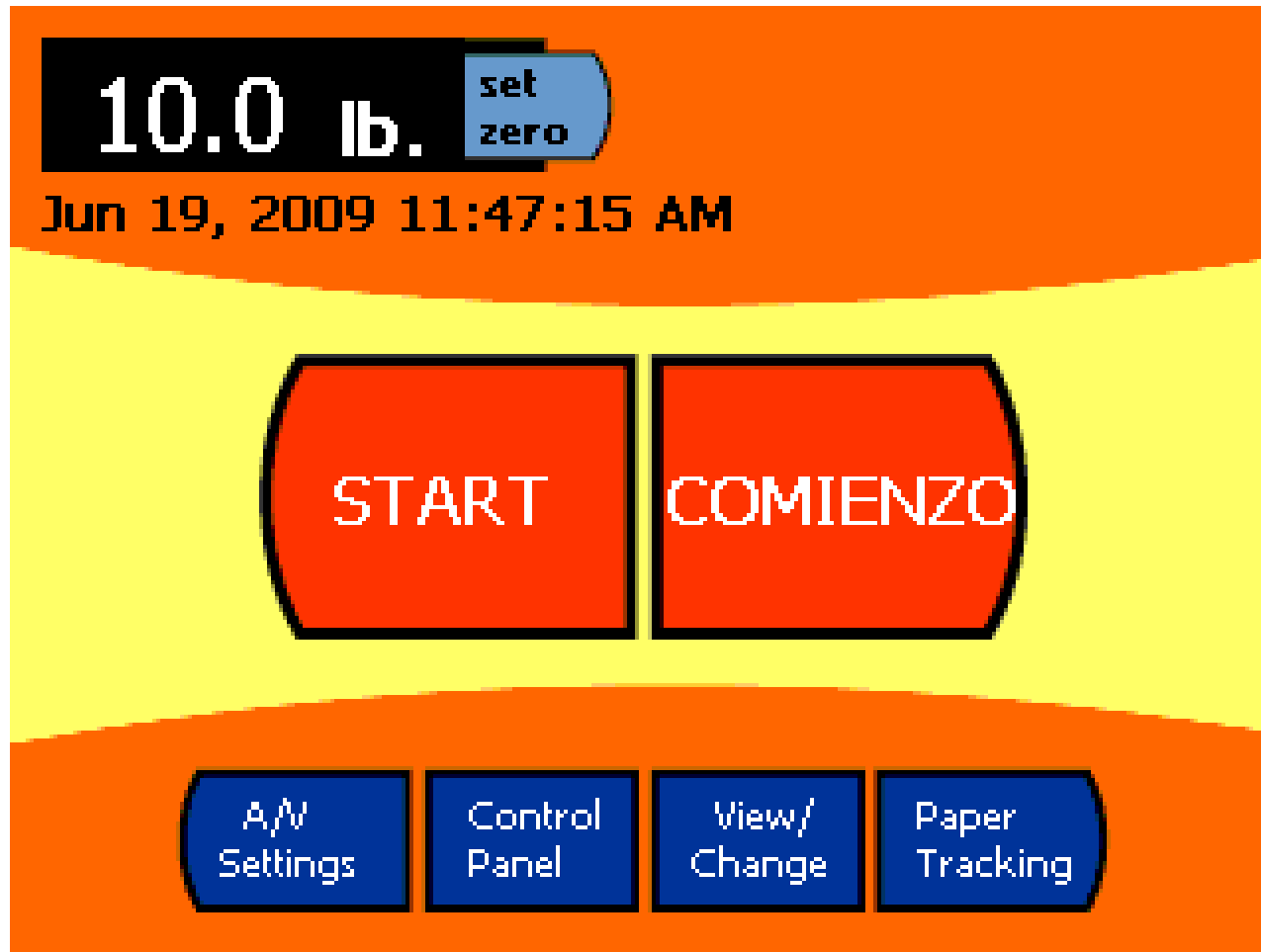
© LeanPath, Inc. | All Rights Reserved

- Menu manifest approach
- Also designed for ease of input into reporting software package

# Fully Automated Tracking



# Waste Recording: Step 1



# Waste Recording: Step 2



A-B	C-D	E-F	G-H	I-J	K-L	M-N
O-P	Q-R	S-T	U-V	W-X	Y-Z	
Anthony P	Catharine I	Cheryl G				
Chris B	Christine M	Dieudonnat C				
Eileen S	Frances S	Fred L				
Jack L	Jake F	Joanne L				
Select Your Name	More	X				



# Waste Recording: Step 3



**4.8 lb.** set zero

Vangie C

Select Food

Select Reason

Select Container

X

Bakery

Beef - Grnd

Beef - Whl

Casserole

Chix

Chix-w/Bone

Compound Salad

Weekly Soup

Daily Soup

Dairy

Deli Meat

More



# Waste Recording: Step 4



**4.8 lb.** set zero

Vangie C

Chix

Select Reason

Select Container

X

Burned/Overcook

Cater Overproduction

Contaminated

Dropped/spilled

Expired

More



# Waste Recording: Step 5



**4.8 lb.** set zero

Vangie C

Chix

Dropped/spilled

Select Container

X

Coffee Shuttle

Full Hotel Pan (1")

Full Hotel Pan (2.5")

Full Hotel Pan (4")

Full Hotel Pan (6")

More



# Waste Recording: Step 6



**4.8 lb.** set zero

Vangie C

Chix

Dropped/spilled

Full Hotel Pan (1")

Save X

Coffee Shuttle

Full Hotel Pan (1")

Full Hotel Pan (2.5")

Full Hotel Pan (4")

Full Hotel Pan (6")

More

Multiply



# Waste Recording: Step 7



**10.0 lb.** set zero Christopher M  
Change User  
Jun 19, 2009 12:09:36 PM

**Weigh More** **Done**

**Value of Last Recorded Item: \$42.81**

A/V Settings Control Panel View/Change Paper Tracking



# After Data Collection

---



- Collecting data is the first step
- Reviewing and using the data is absolutely critical to drive results
  - Compile the data to see opportunities
    - Many are hidden
  - Review trends
  - Set focus areas and follow progress
- Filing sheets after a quick scan= “no-no”
  - Like revving your car’s engine in neutral

# How to Compile Data

---



- If using **paper**:
  - Use MS Excel or Access
  - Key in data
  - Calculate weekly and monthly totals
  - Break down by either food or loss reason
    - Difficult to do both unless you have database skills

# How to Compile Data

---



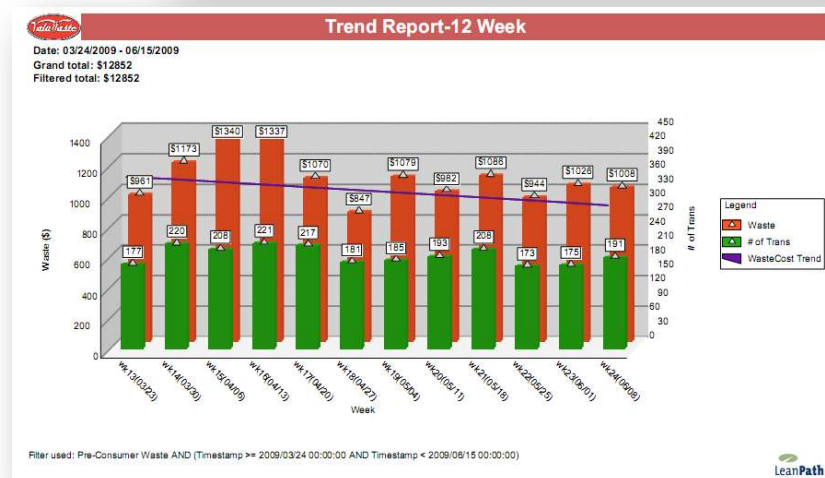
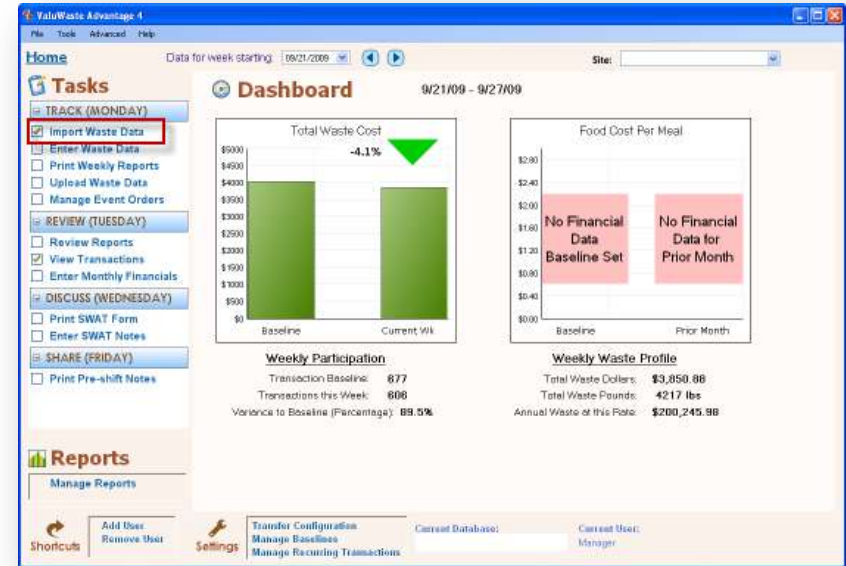
- If using **software**:
  - Use specialized waste tracking application with a custom interface designed to make the data entry process easy
  - Print memorized reports and review outcomes
  - Much easier than paper + Excel!

# How to Compile Data



If using **full automation**:

- Import data automatically; no secondary data-entry/compiling step because it happens automatically
- Print reports & review outcomes
- Easiest approach



# Engage Staff

---



- Post reports
- Discuss in line-ups/pre-shifts
- Recognize engaged staff
- Set specific focus areas for improvement



# Training

---



- All successful tracking programs require
  - Staff training
  - Expectations/standards for participation



# Post-Consumer Waste Tracking

# Post-Consumer

---



- Same methods as pre-consumer:
  - Paper
  - Software+ Paper
  - Full automation
- Conducted only periodically
- Goal is not production & purchasing
  - Focused on menu analysis
  - Focused on guest education & engagement

# Mechanics are Different

---



- Staff Tracks Post-Consumer
  - Dish room staff scrapes into totes for weighing
- Guests Self-Track
  - Scrape & weigh station
  - Best for non-commercial (e.g. schools, colleges)

# Education & Review

---



- Post results publicly
- Communicate actions guests can take to reduce waste
- Assess menus to avoid high-waste items

# Evaluating Tracking Data

# Trends

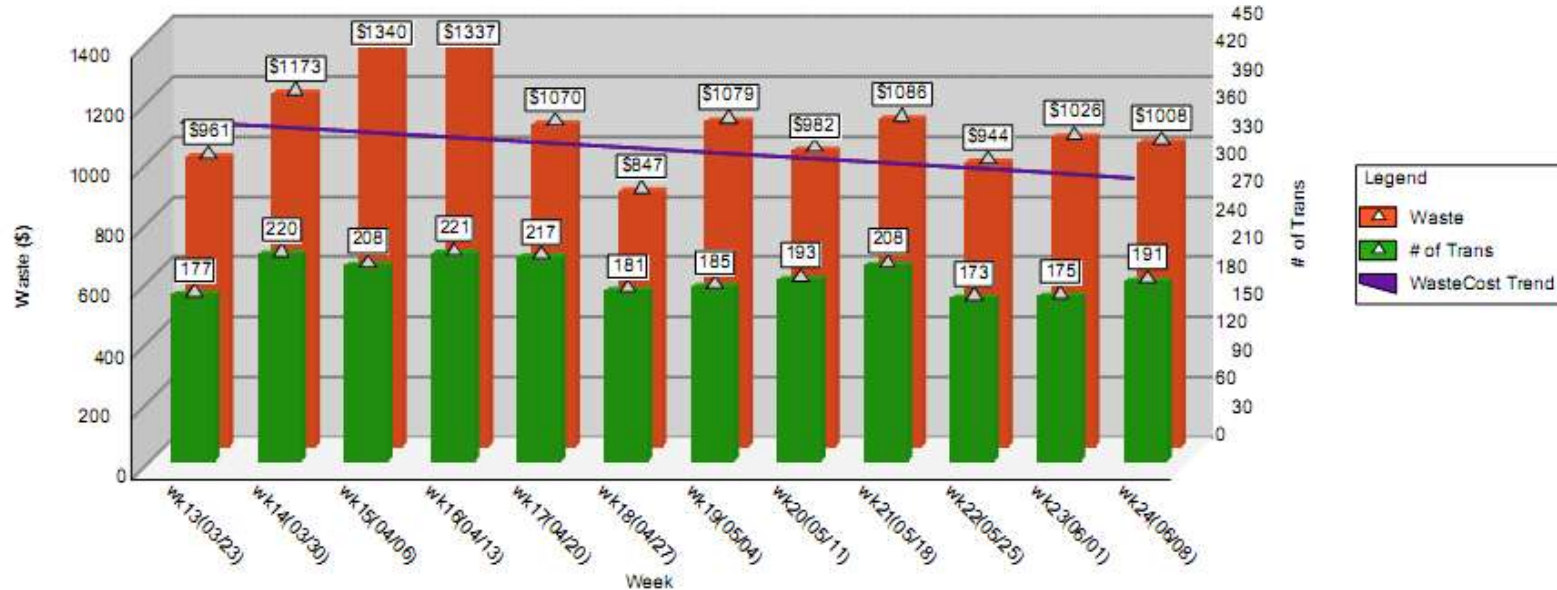


## Trend Report-12 Week

Date: 03/24/2009 - 06/15/2009

Grand total: \$12852

Filtered total: \$12852



Filter used: Pre-Consumer Waste AND (Timestamp >= 2009/03/24 00:00:00 AND Timestamp < 2009/06/15 00:00:00)



# Top 5's and Comparisons

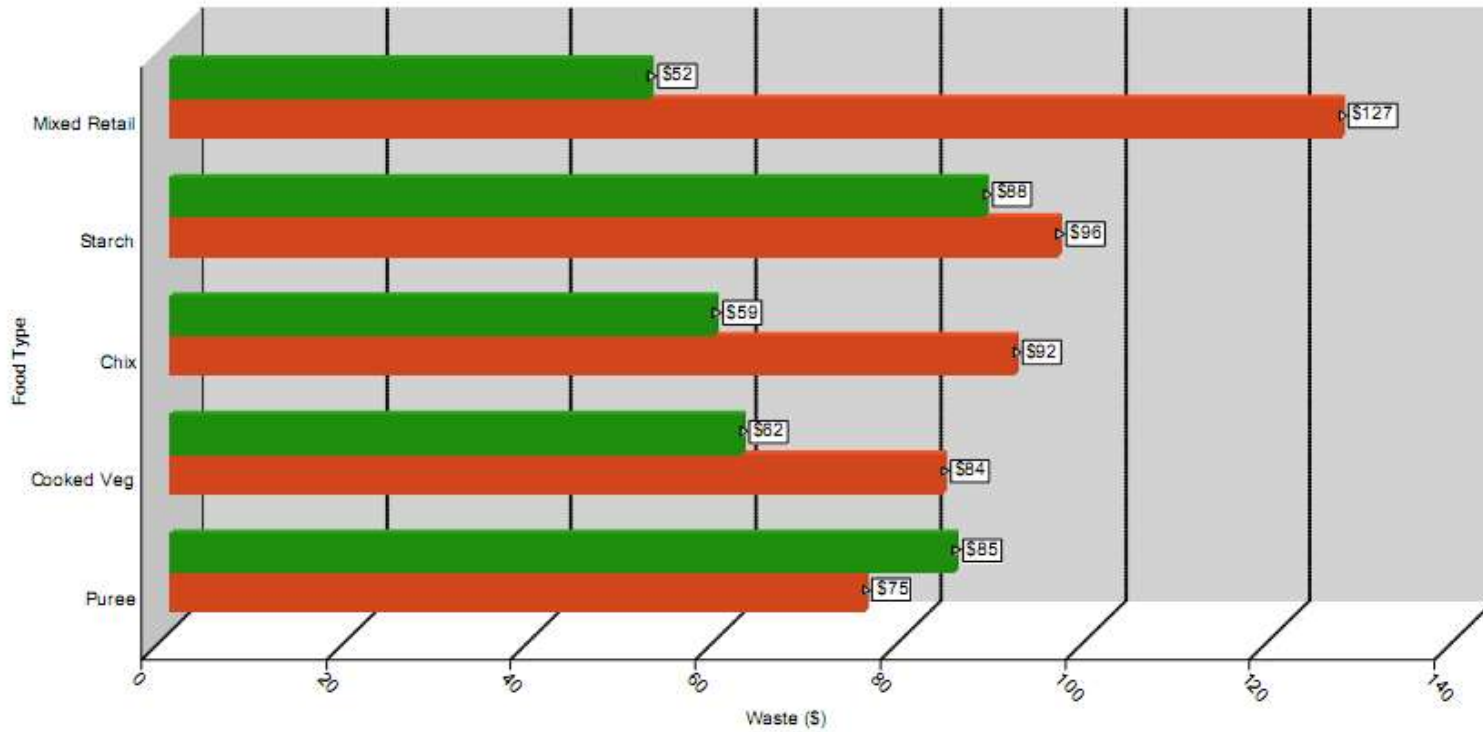


## Top 5-Food Categories

### Legend

Week 1: 06/07/2009 Total: \$939, Filtered: \$473

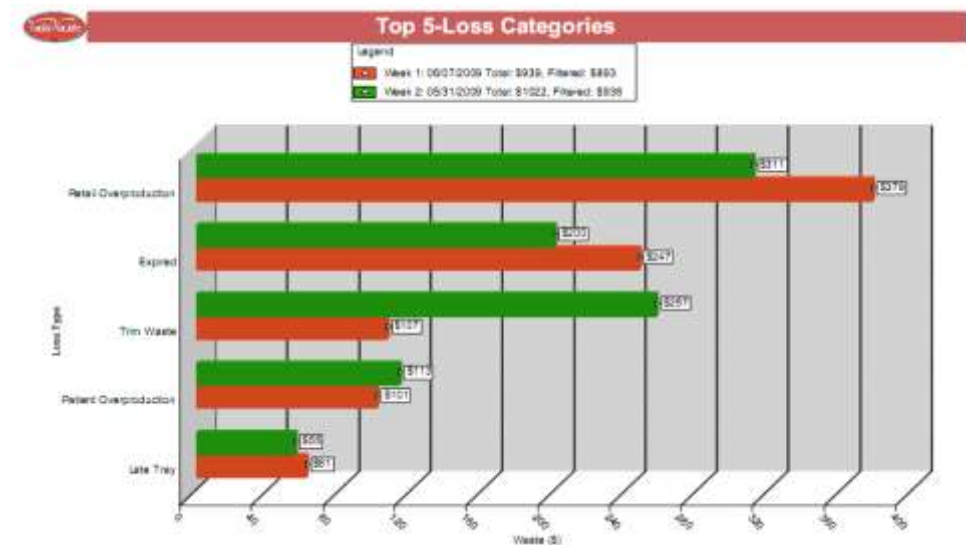
Week 2: 05/31/2009 Total: \$1022, Filtered: \$346



# Others



- High Items
  - Big \$\$'s
- Focus Items
  - Areas you select
- Data quality
  - Missing items
- Close-ups
  - Stations
  - Most Overproduced Items





# **Food Waste Focus**

**[blog.leanpath.com](http://blog.leanpath.com)**

# Notes

[leanpath.com/notes](http://leanpath.com/notes)

# Q&A

**Andrew Shakman**  
Co-Founder & President,  
LeanPath, Inc.



**Contact:**

**Phone:** (503) 620-6512 x100

**E-mail:** [ashakman@leanpath.com](mailto:ashakman@leanpath.com)

**Web:** [www.leanpath.com](http://www.leanpath.com)

**Blog:** [blog.leanpath.com](http://blog.leanpath.com)

**Twitter:** [twitter.com/leanpath](https://twitter.com/leanpath)